



Showrooms of the Future

Unveiled by Leading Contract Furniture Companies



Among the many exciting changes and moves happening this year in the Philadelphia corporate real estate market, new furniture showrooms are trending to the top of the list. Three of Philadelphia's most established furniture groups are unveiling newly designed locations: Knoll is moving to One Logan, Spectrum featuring Herman Miller and other major lines is moving to 1735 Market, and Pomerantz featuring Steelcase and other major lines is fully renovating at 123 S. Broad. Each showroom will be a unique new working environment, a place for clients and designers to experience products, participate in the design process, and impact the future of how their spaces will function. These new showrooms are large investments in the Philadelphia marketplace, often times, clients will feel the need to go to New York City to see the latest product offerings. These showrooms will continue to elevate Philadelphia's corporate real estate wealth of resources.

continued on page 2

Volunteer Spotlight

Suzanne Linus Miller

Architecture and
Design Manager
Knoll



Corenet Volunteer Position. Currently Co-chair of Communications Committee, former Chair of Education Committee

I chose to join Corenet because... I believe it is the best Commercial Real Estate networking group to meet end users and professional colleagues

When I'm not at work or at Corenet events, you'll find me... Spending time with my husband and our infant son Jackson

I am originally from... the Fox Chase section of Philadelphia

continued on page 5

Don't Miss These Events!

June 28: **Volunteer at Philabundance**
Philabundance Hunger Relief Center,
Philadelphia, PA

July 31: **Golf Outing**
Union League Golf Club at Torresdale,
Philadelphia, PA

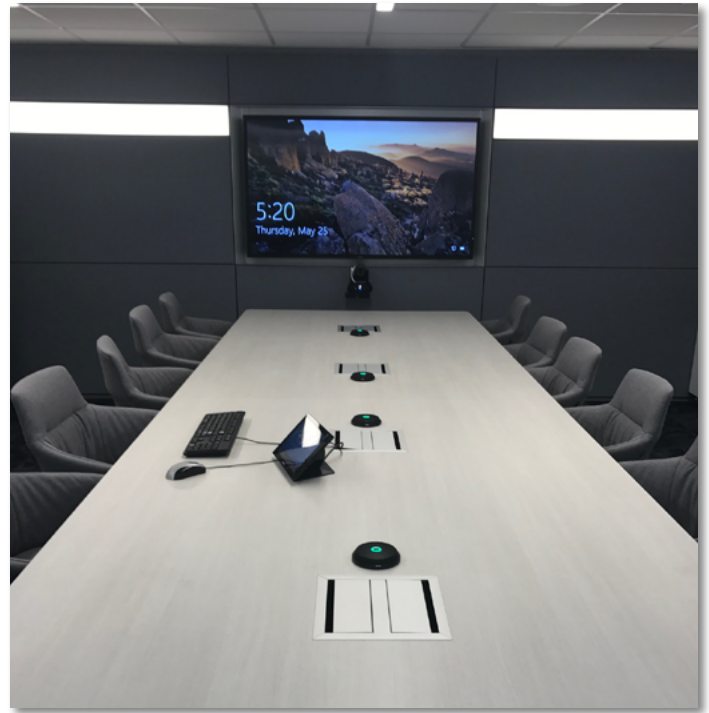
August: **Trolley Tour**
TDB

September 28: **Mentor Series # 3**
TBD

Nov. 5-7: **2017 CoreNet Global Summit**
Seattle, WA

Visit the [events section](#) of the chapter website for more information and to register.

As we talked with all three, there was one strong underlying theme regarding the design of each showroom – they are no longer “showrooms.” As the Pomerantz team said, “We like to think of our space as more of a live illustration of best practices, versus being called a showroom. A showroom is a place where everything is perfect and untouched. Our space shows the design and products in use, it is active and alive.” Pomerantz, itself, is demonstrating the open office concept firsthand by having its CEO and COO in open workstations. Knoll, who occupied their previous location for 30 years, sees this move as a way to embody Knoll’s workplace theme of flexibility by offering a variety of adaptable spaces within the office. They defined their new place as a living lab whereby their team will be working day-to-day in each area of the new showroom. Knoll will be introducing cutting edge technology where clients



substantial growth for the Gesture chair, as people become more aware of the effects of mobile technology on posture. Knoll’s best selling workstation product is Dividends Horizon, as it is versatile in its componentry and finishes while meeting various price points. The newest, most exciting product for Knoll will be the recently launched, Rockwell Unscripted, a line of 30 products in 6 different categories that address the workplace beyond workstations and private offices. Spectrum is excited to exemplify Herman Miller Living Office. The floorplate will be an open plan that showcases the different workstyles. There are no private offices. Orange Box will be featured as well as it is a new acoustic pod product for which Spectrum has been named an exclusive dealer.

can experience different types of settings of their products. Spectrum, who is relocating from the suburbs, chose 1735 Market so they could be more accessible to clients and business partners. One of their features is Exclave, a working library for designers and clients, where they can experience the furniture products and benefits firsthand.

So what is the best offering to see or experience at each of these locations? Pomerantz’s best seller is Steelcase Answer, a flexible system for workstations. As for chairs, they are predicting

All 3 furniture teams agree that technology and mobility will continue to influence furniture trends of the future. Be sure to check out all 3 showrooms to immerse yourself in the ever changing world of furniture, technology, and workplace trends.



June 28:

Volunteer at Philabundance



June 28th will be our fourth annual event supporting Philabundance, the region's largest hunger relief organization. Philabundance provides food to 90,000 individuals each week via neighborhood distribution programs and 350 member agencies including food pantries, shelters, and emergency kitchens in the Delaware Valley.

Our volunteer work will take place in Philabundance's Hunger Relief Center near the Philadelphia Sports Complex in South Philadelphia. The Center is the main distribution center for the organization's sorting and packing operation to support supplemental and emergency food items. Our work is in a safe and secure area and involves sorting and packaging cans and boxes of groceries and packaged meats. The work is light-weight, easy, and rewarding.

When our shift is completed, please join us at XFINITY Live! for refreshments, networking, and watching the Phillies play in Seattle.

EVENT DETAILS

Date: Wednesday, June 28, 2017

Time: 12:30 PM – 3:30 PM

Location: Philabundance Hunger Relief Center,
3616 S. Galloway Street, Philadelphia, PA

Register Here: gmarx@bluecapeconomicadvisors.com



Seattle: November 5-7 2017

CoreNet Global Summit 2017

Blurring the Lines: Transcending Boundaries

Click here
to register
today!

The world is drawn on maps with lines that divide countries, cultures, people, politics, economies and ideologies. Let's face it — we have live in a walled world.

Whether physical or virtual, real or perceived, the barriers that separate people and places are widely recognized as part of our personal and professional lives. Walls have long divided corporations from society, work from home, managers from workers, function from function, cost centers from revenue generators and the list goes on. But in many work environments hard lines have softened. Rigid rules have been bent. Previously unbreachable boundaries have been permeated.

Dramatic changes in the business environment, globalising markets, demographics, risk and technology have altered the structure of the enterprise. Empowered consumers expect a total customer experience. Brand equity is king. Big data and security risks are the new norm. These seismic shifts require transformational thinking and integrated solutions. Corporate real estate professionals like you and the corporations you work for, must examine — and exploit — the many implications of blurred lines at a time of unprecedented uncertainty. The 2017 CoreNet Global Summits will explore ways you can transcend traditional boundaries through divergence.

Early Bird rates expire June 19th

July 31:

CoreNet/NAIOP Annual Golf Outing

Join us for our Annual CoreNet Philadelphia and NAIOP Golf Outing at Union League Golf Club at Torresdale! **For Sponsorship information, [click here.](#)**

EVENT DETAILS

Date: Monday, July 31, 2017

Location: Union League Golf Club
at Torresdale, 3801 Grant Avenue,
Philadelphia, PA 19114

Schedule:

Registration/Putting Green/Driving

Range: 10:30am

Lunch: 11:00am

Shot Gun Start: 12:30pm

Golf Clinic: 3:00pm

Dinner/Cocktails/Prizes/Raffle: 5:30pm

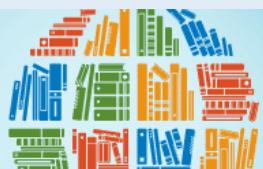


CoreNet Global Knowledge Center and Research

The CoreNet Global Knowledge Center is the single source for corporate real estate research. An important benefit to our members, the library contains original research, member organization publications, market reports and industry specific research reports and white papers. Search for what you need, browse the knowledge topics and simply ask the Librarian if you need assistance.

Get started with the Knowledge Center:

[Log in](#) with your CoreNet Global account
[Ask the Librarian a question](#)



Executive Committee
Greater Philadelphia Chapter

President:

Chuck Bagocius, MCR • TD Bank

Vice President/President-Elect:

Mark Golboro • AIG

Treasurer:

Matt Knowles • CBRE

Secretary:

Brian Edmonds • SVN | The Concordis Group

Past President/Advisor:

Ken Zirk • CBRE

Past President/Advisor:

Jerry O'Brien • Comcast

CoreNet Global

133 Peachtree Street, N.E., Suite 3000
Atlanta, GA 30303



St. Gobain Recap

On April 12th, CoreNet Philadelphia hosted a phenomenal panel event at Saint-Gobain in Malvern, attracting 70 attendees. The event focused on how the Real Estate and Design teams partnered with Saint-Gobain to identify guiding principles for the project and how it was transformed into a finished product that exceeded everyone's expectations. The event was kicked off with a tour of the space followed by a panel group. The panel speakers included Maureen S. Byrne, Manager of Projects, Interior at Jacobs; Tamara S. Mueller, Manager, Headquarters Communication at Saint-Gobain; Lisa McGregor, Director of Planning, Planning Strategist at Jacobs; and Robert A. Fogarasi, Vice President & Senior Project Manager at Binswanger. It was moderated by Kimberly Bombery Smith, Senior Director of Workplace Strategy at Knoll. Attendees enjoyed learning about how they integrated St Gobain's state of the art building products into the space.

Volunteer Spotlight *continued from page 1*

Growing up, I wanted to be...
a world traveler

The best piece of advice I ever received is... It came via a sign that a former boss gave me – 'If you can only be one thing, be yourself'

The best book I've read is... To Kill A Mockingbird, there are so many important life lessons in the book

My favorite thing about Philly is...
Tough one... its great restaurant scene, its grit and its affordability

If I had to take a tourist to one Philly area destination, it would be...
Independence Hall.

My favorite restaurant is... too many

My favorite vacation destination is...
anyplace that requires a passport

2017 Eastern Regional Conference Recap

Place certainly mattered at the “ERS 2017: Place Matters” conference held on June 5-6 at NYU’s School of Law. The 300 participants at the conference got a 24 hour dose of excitement all over New York City. Many kicked off their conference experience by partaking in one of the special tours which included 3 different choices: Tour 1 Hudson Yards on Manhattan’s West Side, Tour 2 Industry City in Sunset Park, Brooklyn, and Tour 3 Downtown Manhattan including WeWork and the changing landscape of Downtown New York.



Front Row: Brian Edmonds (SVN | The Concordis Group), David Kontra (GE), Ken Zirk (CBRE), Judy Ginieczki (Jacobs), Michael A. Nutter, Former Mayor of Philadelphia, John Campbell (Francis Cauffman) Back Row: Matt Knowles (CBRE), John Bullen (Comcast), Mark Golboro (AIG)

At NYU, the conference included professional development sessions, large general sessions, and small breakout sessions. Supporting the theme of “Place Matters,” many of the sessions centered around the growth of great cities and communities and how this growth supports vibrant workplaces. Michael Nutter, Former Mayor of Philadelphia, was the concluding speaker who focused on the “The Art and Science of Positioning Cities for Growth and Vibrancy.”

Last but not least, the end user dinner “place” certainly mattered. End users and sponsors enjoyed a spectacular dinner on the 64th Floor of One World Trade Center. Despite the fog, guests enjoyed a spectacular evening of food, drinks, and networking in the center of it all in New York City.



Call for Volunteers!

CoreNet Philadelphia is looking for eager volunteers! There are many ways to get involved such as helping a committee, hosting an event at your facility, speaking at an event, writing an article for the newsletter, and more. Please [let us know](#) if you are interested!

NOTE: You must be a CoreNet member to volunteer for a committee.



Welcome New Members

Barton Bland • Studios Architecture

Sergio Coscia • Coscia Moos Architecture

Marnique Heath • Studios Architecture

James Sprayberry • Trittech Communications

Mahesh Vidyasagar • Comcast

Andrew Bennett • Henderson Engineers

Kelly Funk • IA Interior Architects

Melissa Kelley • Henderson Engineers

Steven Stefanski • Cresa

Robert Voth • Bala Consulting Engineers



NEWS

Spring 2017

Thanks to Our Sponsors

Gold:



Intelligent
Real Estate
Solutions



BENTLEY®

CBRE

formcraft



JACOBS®



LIBERTY
PROPERTY
TRUST



WEXFORD
SCIENCE+TECHNOLOGY

Spectrum
A Herman Miller Dealer

workspace
property trust

Silver:



Steelcase

Bronze:



Francis Cauffman